



Annual Examinations for Secondary Schools 2014

FORM 5

TEXTILES STUDIES

MARKING SCHEME

1. a) Suggestion for suitable rectangular body shape:
Give credit to:
Wide straight leg trousers, A-line skirts, double breasted tunics, large collars etc.
Accept other suitable drawings. (1x3 = 3 marks)
- Suggestion for suitable pear body shape:
Give credit to:
v-necklines set-in sleeves, A-line skirts etc.
Accept any other suitable drawings. (1x3 = 3 marks)
- b) Patterned fabric suitable for rectangular body shape could include:
Any one: large dots, thick stripes, horizontal stripes, large designs etc.
Accept other suitable patterns. (1 mark)
- Patterned fabric suitable for pear body shape could include:
Any one: small dots, thin lines, vertical lines etc shown on hip area.
Accept other suitable patterns. (1 mark)
- c) V – necks, sweetheart necklines, pleats, gathers, puffs etc.
Accept other suitable answers. (1x4 = 4 marks)
- d) Suggestion for suitable rectangular body shape:
Give credit to:
light colours e.g. white, pink, red, yellow, peach light green, light blue etc.
Accept other suitable colours. (1 mark)
- Suggestion for suitable pear body shape:
Give credit to:
black, grey, blue, navy blue, dark green, brown etc coloured on hip area.
Accept other suitable colours. (1 mark)
- e) Large dots have the illusion of enlarging body parts, whereas vertical stripes give the illusion of a thinner body.
Give credit to other possible valid answers. (1x2 = 2 marks)

2. a) Possible answers:
- Reasonable cost
 - Comfortable
 - Smart
 - Warm to wear in winter and cool in summer
 - Easy to move in
 - Easy care
 - Mix and match (coordinates)
- Accept any other possible answers.* (1x3 = 3 marks)
- b) *Give credit to a clear skirt and trouser design.* (1x2 = 2 marks)
Give credit to front skirt and trouser design. (1x2 = 2 marks)
Give credit to back skirt and trouser design. (1x2 = 2 marks)
- c) *Give credit to correctly named pocket on the skirt and the trousers eg: Hip yoke pocket, patch pocket and in-seam pocket.* (½x2 = 1 mark)
Give credit to clearly drawn pockets. (½x2 = 1 mark)
- d) i. Single dart, double pointed dart (1x2 = 2 marks)
- ii.
 - Draw a line the length of the dart (e.g. 8cm). Mark 1.5cm on each side of the line.
 - Draw a slanting line from the top part of the 1.5cm allowance using a tailor's chalk and a ruler and join till the last point of the line.
 - Fold the centre of the dart, pin, tack and machine to the point.
 - Reverse machine or knot to fasten securely till the ends and iron.
(1x4 = 4 marks)
- e) *Any one of: Wool, acrylic, woollen jersey.*
Skirt design determines suitability of fabric choice.
Accept any other suitable answers. (1 mark)
- f) Chosen machine needle:
Ballpoint needle for wool, acrylic, or woollen jersey. (1 mark)
- Reason: the rounded tip allows the needle to pass between the fabric threads by separating them. Thus it prevents laddering. (2x1 = 2 marks)

3. a)	Wool is scoured to remove dirt and lanolin	2
	Wool is carded (brushed) between rollers	3
	Shorter fibres are used to make wool yarns while longer fibres are used to make worsted fabric	4
	Wool is sheared from the sheep	1

	After picking, cotton is ginned to remove seeds, stalks and leaves	1
	Fibres are twisted together with a Z-twist to give strength	3
	During carding the fibres are brushed into thin film	2
	Fibres are separated to become finer	4

(1x6 = 6 marks)

- b) i. Cotton is calendered to make the fibres of cotton flat and smooth. When the surface of the fabric is smoother it shines more. (1x2 = 2 marks)
- ii. Name: Flame Retardant/ Moth proofing/ Shrink resistance (1 mark)
- Description: Students will describe one of the above methods (1x2 = 2 marks)

4. a) *Any one of:*
- change the shirt for another one.
 - give the money back.
- (1 mark)

- b) *Any one of:*
- Choose an effective detergent that does the job for a particular purpose.
 - Choose a detergent that meets the household needs in general.

Accept any other suitable answers. (1 mark)

c)

Laundry Ingredient	Number	Function
i. Enzymes	iii	Give the wash a clean smell.
ii. Suds stabilizers	i	To break down protein such as egg, blood and sweat.
iii. Perfumes	ii	Keep the lather down.

($\frac{1}{2} \times 3 = 1\frac{1}{2}$ marks)

- d) i. Eco-label (1 mark)
 ii. Less packaging. (1 mark)

5. a) *Any one of:* Felt, Polyester, Hessain, Cotton (1 mark)

b) Students will draw three decorative embroidery stitches and name each one.
 ($\frac{1}{2} \times 6 = 3$ marks)

c) i. To give additional strength, support or shape to sewing, quilting and crafts projects. (1 mark)

ii.

1	Suitable to use as they have a heat-activated adhesive on one side. This can be ironed to the wrong side of your fashion fabric, giving complete contact.	3	Woven
2	This is ideal for fabrics with textures that cannot be ironed. It is meant to be sandwiched between layers of fabric and sewn into place.	4	Non-woven
3	It is created from warp and weft fibres interwoven together. This type does not have any stretch and will work well with any woven fabric.	1	Fusible
4	This one looks like fleece or felt. There isn't a grain line and you can cut it in any direction.	5	Knit
5	It is a stretchy interfacing used when you are using a knitted fabric, such as jersey, ribbed, or double knit.	2	Sewn-in

($\frac{1}{2} \times 5 = 2\frac{1}{2}$ marks)

- d) - Cut the pattern pieces out.
 - Lay the rough side to the wrong side of the fabric.
 - Fuse with a hot iron and a damp cloth on the smooth side of the Vilene.
 - Press well all over the surface to be covered, and leave it for ten minutes to set well before checking.

(1/2x4 = 2 marks)

- e) i. Non-woven

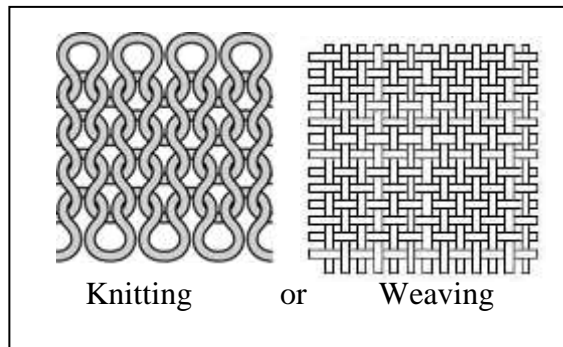
(1 mark)

- ii. *Any two of:*

- Easy to sew
- Crease-resistant
- Does not fray
- Stable to washing and dry-cleaning

(1x2 = 2 marks)

- iii. *Any one of:*



Drawing: (1 mark)

Naming: (1 mark)

6. a) i. Name of fabric: *Any one of:* Cotton/ Polyester/ Rayon

(1 mark)

Reason:

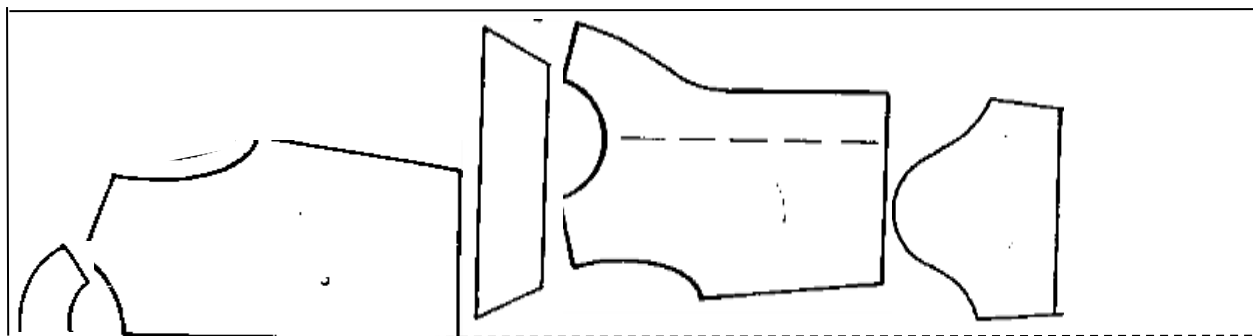
Cotton permits movement of air from the skin through the fabric, allowing heat to dissipate and reduce humidity. It also absorbs moisture well, keeping the skin dry and increasing evaporation.

Rayon is cool and comfortable to wear: it does not trap body heat and absorbs water easily.

Polyester reflects heat back to the body and inhibits the outward flow of warm, moist air.

(2 marks)

b) selvedge



fold

(Label fold and selvedge $\frac{1}{2} \times 2 = 1$ mark)

(Correct layout of pattern pieces $\frac{1}{2} \times 5 = 2\frac{1}{2}$ marks)

c) i. shirt (1 mark)

ii. Students must draw and name two types of collar e.g. Peter Pan collar, stand collar etc.

Give credit for correct drawing (2 marks)

Give credit for naming the collar ($\frac{1}{2} \times 2 = 1$ mark)

- iii.
- Prepare facings by joining **back** facing to front facings at shoulders. Finish off, **neaten** and press.
 - Turn a **fold** to W.S. along outer edge of facings. **Machine** along the edge and press.
 - Sandwich collar in between facings and garment, matching C.F. (**Centre Front**) and Centre Back.
 - Tack and machine firmly. Trim and snip at **intervals** to allow for curve.
 - Turn facing over to W.S. Press lightly. Catch stitch facing to garment at seam only.

($\frac{1}{2} \times 6 = 3$ marks)

d)

Set-in Sleeve

Puffed Sleeve

Raglan Sleeve

($\frac{1}{2} \times 3 = 1\frac{1}{2}$ marks)

7. a) i. *Any two of:*

- Buy classic clothes which can always be worn.
- Create your own vintage clothes.
- Buy garments made of good quality fabric.
- Make minor adjustments such as adjust length etc.

Accept any other suitable answers.

($1 \times 2 = 2$ marks)

ii. *Any two of:*

- One can give them to charity shops.
- Open shops selling second hand garments.
- Hand over worn clothes, which are in good condition, to other people.
- They can be collected by Refab Malta which are then exported abroad.

Accept any other suitable answers.

($1 \times 2 = 2$ marks)

b) *Any two of:* include the promotion of recycled clothes through advertising, TV programmes, newspaper, stitches, distribute brochures on subject, organise local council meetings and talks.

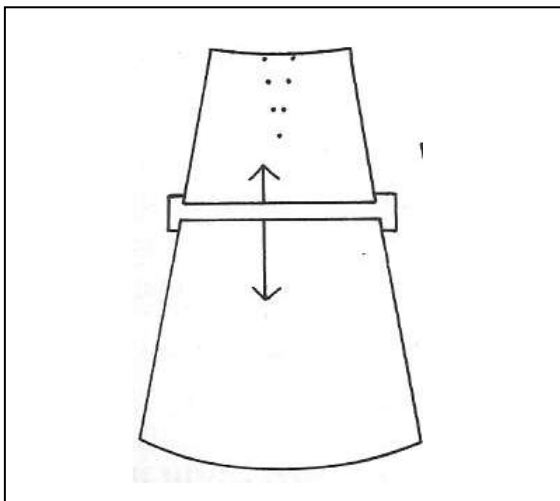
(1x2 = 2 marks)

c) i. Fabric produced using natural fertilisers, pesticides and herbicides to protect the biodiversity of the environment. (1x2 = 2 marks)

ii. Cotton. (1 mark)

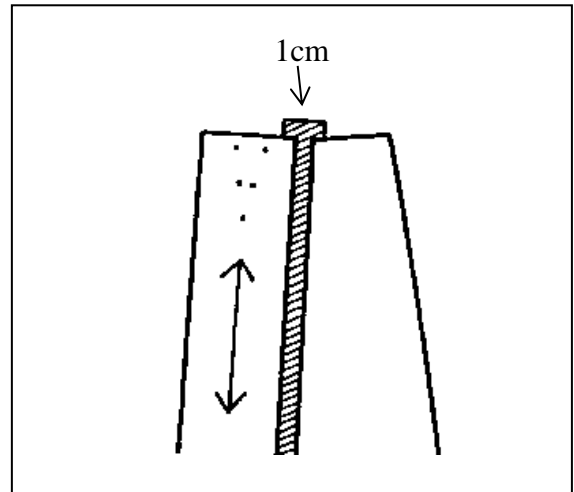
iii. Parents are concerned for the health and wellbeing of their child and of the workers producing the fabric. (2 marks)

8. a) Increase the length by 5cm



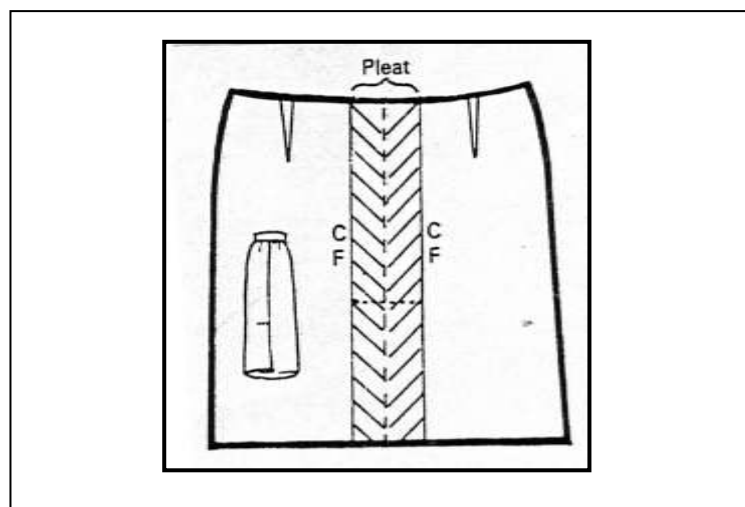
(2 marks)

b) Decrease the width by 4 cm



(2 marks)

c) Add central pleat to a plain skirt.



(2 marks)