

- 3a. i. *Any three from:* Viscose, Modal, Acetate, Tricel (3 x 1 mark = 3 marks)
- ii. Example of regenerated fibre: Viscose (1 mark)
Any four properties from:
- Absorbent and therefore suitable for wearing in hot weather.
 - Strong – but not as strong as cotton.
 - Washes easily as fibres shed (soil) dirt.
 - Can be dyed easily.
 - Can be produced cheaply. (4 x 1 mark = 4 marks)
- iii. Viscose can be produced cheaply; thus, it would help reduce the cost of the textile item. (2 marks)
- b. i. *Any two from:*
Nylon, Antron, Tactel, Cordura and Zytel.
Give credit to other possible answers. (2 x 1 mark = 2 marks)
- ii. *Any two from:*
- It is very strong.
 - It does not crease.
 - It is non-absorbent.
 - It dries quickly. (2 x 1 mark = 2 marks)
- iii. *Any two from:*
Ropes, tents, jackets, umbrellas. (2 x ½ mark = 1 mark)
- iv. On dry days, nylon becomes electrostatically charged when rubbed against the body or other layers of fabric. This happens because dry fabrics do not absorb moisture; so they would not conduct electricity away and the charge remains still. (2 marks)
- c. i. *Any four from:*
stocking, leggings, leotard, sports wear, skinny jeans.
Accept any other suitable fabric. (4 x ½ mark = 2 marks)
- ii. Lycra materials have:
- excellent elasticity and
 - provide firm support and comfort. (2 x 1 mark = 2 marks)
- d. PVC is non-absorbent and so it is easy to wipe clean. The cotton back is comfortable. (2 marks)

4a. Peter Pan collar. (1 mark)

b. Give credit for any correct drawing and name of collar e.g. Stand collar, Chinese collar.
Drawing (1 mark)
Naming (1 mark)

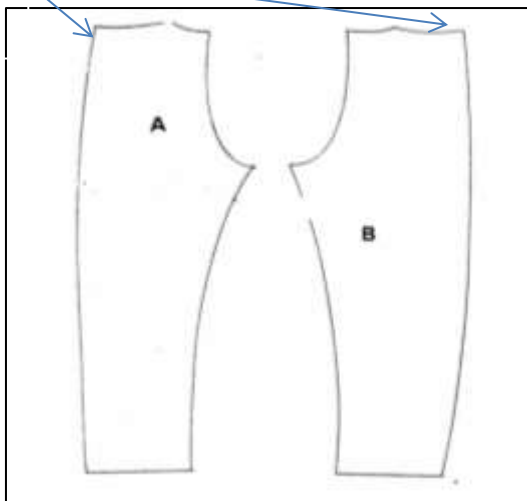
- c.
- (A) Cut out the pattern pieces and interfacing.
 - (B) Apply the interfacing to the wrong side of each under collar. With the right sides together, pin and tack each upper collar to each under collar, leaving the neck edges open. Stitch each unit along the outer seam line. Stitch across corners.
 - (C) Trim the seam allowances and corners. Snip the curved seam allowances, being careful not to snip through the seam line.
 - (D) Press all of the seams open.
 - (E) Press the seam allowances toward the under collar.
 - (F) Turn the collar right side out. (6 x 1 mark = 6 marks)

d. It is important so that you will reduce bulkiness inside the collar and the finished result would be neater. (2 marks)

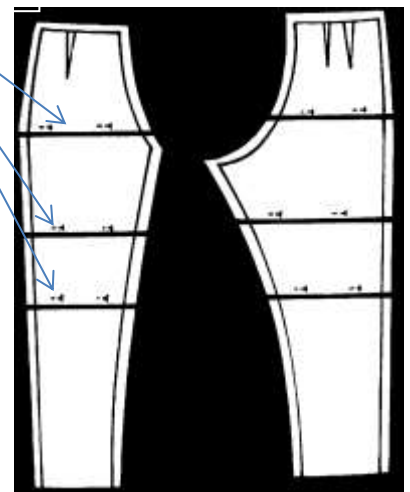
5a. i. Widen the waist of the pattern by 4 cm. Divide the alteration into four. Add 1cm from the side of the trousers as in the diagram. *Drawing* (1 mark)
Description (1 mark)

ii. Shorten the pattern by 6 cm. Fold on the line on each pattern piece and make a double tuck. Re-draw the pattern line as in the diagram. *Drawing* (1 mark)
Description (1 mark)

i. widen 1 cm from the side seam of the trousers



ii. Fold on each line



- b. i. straight grain ii. dart iii. button hole position (3 x 1 mark = 3 marks)

c.  (1 mark)

6a. *Any two from:*
musicians / political figures / cultural icons / celebrities / royalties / media
Accept any other valid answer. (2 x 1 mark = 2 marks)

b. *Any two from:*
Punk / Rockers / Hippies / Rappers / Skinheads / Rasta
Accept any other valid answer. (2 x ½ mark = 1 mark)

c. i. *Any two from:*
Marc Jacobs / Yves Saint Laurent / Christian Dior / Guccio Gucci / Miuccia Prada /
Stefano / Gabbana / Valentino / Roberto Cavalli
Accept any other valid answer. (2 x 1 mark = 2 marks)

ii. Students design and colour an outfit (e.g. dress, jumpsuit) both from the front and the back.
Give credit to good design, colour scheme and neatness.
Front (2 marks)
Back (2 marks)

iii. Students identify two fashion features currently in style. These features may be on the clothing, jewellery or accessories. (2 x 1 mark = 2 marks)

iv. Students design and colour a pair of shoes and a bag to go with the designed outfit.
Give credit for colour scheme, neatness and creativity.
Shoes (2 marks)
Bag (2 marks)

7a. i. Amanda: Inverted Triangle / Apple Shape
Kim: Triangle / Pear Shape (2 x ½ mark = 1 mark)

ii. Amanda: Upper Body Garment – V-neck sleeveless top / Collar shirt / Peplum top
Lower Body Garment – Peplum skirt / Bubble skirt / Boot cut jeans (2 x 1 mark = 2 marks)

Kim: Upper Body Garment – Boat neckline stripped top / Detailed neckline top
Lower Body Garment – Wide trousers / A-line skirt / Flared skirt (2 x 1 mark = 2 marks)

iii. Amanda – *Any one from:* Skinny trousers, oversized collars, puffed sleeves, shoulder padded jacket.
Kim – *Any one from:* Pencil skirt, skinny jeans, long jackets. (2 x 1 mark = 2 marks)

8. a. The type of stain; The material (2 x 1 mark = 2 marks)
- b. Identify the fabric. Soak the garment in biological detergent. Then wash normally. (2 marks)

9. a. *Any four from:*
- Famous people
 - Special offers (e.g. Buy two, get one free) and discounts
 - Free products
 - Promotion in shops
 - Testimonials
 - Making a product look perfect
- Give credit to any other valid answer.* (4 x 1 mark = 4 marks)

b. **Sizing**

Sizing is important when buying clothes in order to ensure that the clothes have a good fit on you. This will make you look smarter in clothes, as well as more elegant. Clothes should be able to fit you correctly and they should be neither too small nor too big for you. (2 marks)

Labelling

Labelling is important in order to ensure that you care for your clothes properly. Correct labelling will tell you important information about your garment, such as what fabric it is made of, how to care for it properly, and any other additional information deemed important by the clothes' manufacturer. (2 marks)

Quality of fabrics

The quality of fabric is very important when buying new clothes as you must ensure that the fabric is durable and able to withstand wear and tear. Good quality fabric will last you for many years. (2 marks)