

Annual Examinations for Secondary Schools 2014

FORM 2

MUSIC (OPTION): PRACTICAL

Marking Scheme and Result Sheet for Practical Examination
(to be filled in for each candidate)

Name: _____

Class: _____

Exercise	Marks	Marks Given	Comment
Piece 1	15 marks		
Piece 2	15 marks		
Piece 3	15 marks		
Aural Awareness	13 marks		
Scales and Arpeggios	20 marks		
Sight Reading	10 marks		
Public Performance	12 marks		
Total	100 marks		

Annual Examinations for Secondary Schools 2014

FORM 2

MUSIC (OPTION): THEORY

Marking Scheme

Marking Scheme

1a. Name the following notes.

5 marks



Five musical staves are shown, each containing a single note. The notes are: B (treble clef, second line), E (bass clef, second space), G (treble clef, second space), E (bass clef, second space), and G (treble clef, second space). The notes are labeled with their respective letter names below the staves.

1b. Write the enharmonic equivalent of the following notes.

5 marks



Five musical staves are provided for writing enharmonic equivalents. The first three staves are in treble clef, and the last two are in bass clef. Each staff contains a single note with a double bar line to its right, indicating where to write the answer.

2. Add the time-signature to the following excerpts.

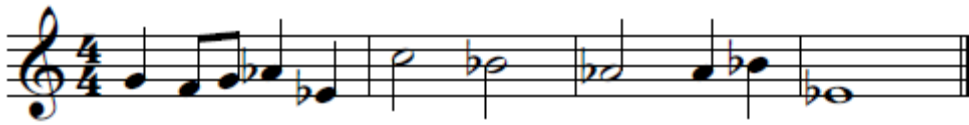
8 marks



Four musical excerpts are provided for adding time signatures. The first excerpt is in bass clef and has a 3/2 time signature. The second excerpt is in treble clef and has a 3/8 time signature. The third excerpt is in treble clef and has a 4/4 time signature. The fourth excerpt is in bass clef and has a 2/2 time signature.

3. a. Put all the necessary accidentals to make this melody in the key of Eb major.

6 marks



3.b. Name the key of the following melodies.

4 marks



C minor



A major

4. Write the following scales using the given rhythm.

10 marks



A major ascending without key-signature.



E major descending with key-signature.



B minor ascending with key-signature.



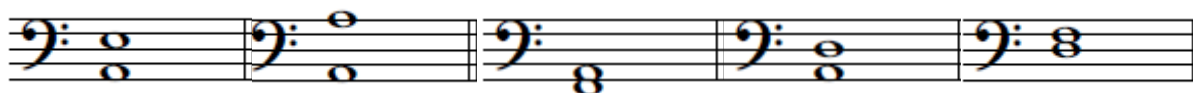
C minor ascending with key-signature.



D minor descending without key-signature.

5 marks

5.a. Name the following intervals.



Perfect 5th

Octave

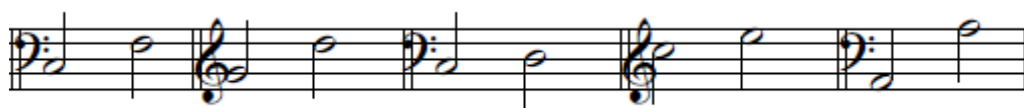
Major 3rd

Perfect 4th

Minor 3rd

5 marks

5.b. Write the following melodic intervals.



Perfect 4th

Perfect 5th

Major 2nd

Major 3rd

Octave

8 marks

6. Transpose the following melody to the treble clef.



Lento: Slowly. (1)

Allegro: Lively. (1)

Accelerando: Getting Faster (1)

10 marks

10. Write TRUE or FALSE next to the following statements.

- a. Hansel and Gretel is a fairy-tale opera written by Mozart. False

- b. Jupiter and Mars are two movements from The Planets by Gustav Holst. True

- c. Vaughan Williams is an English composer, with a great interest in English folk music. Fantasia on Greensleeves is taken from an old English tune - Greensleeves, found in one of his operatic compositions. True

- d. Eine Kleine Nachtmusik is a serenade for string orchestra written by Beethoven. False

- e. The melody of the Bydlo (The ox-cart) in 'Pictures at an Exhibition' written by Modeste Mussorgsky, is played by the Bass Clarinet. False

Theory Paper (Levels and Percentages)

Levels	Percentages
Level 8	5%
Level 7	60%
Level 6	25%
Level 5	10%
Total	100%