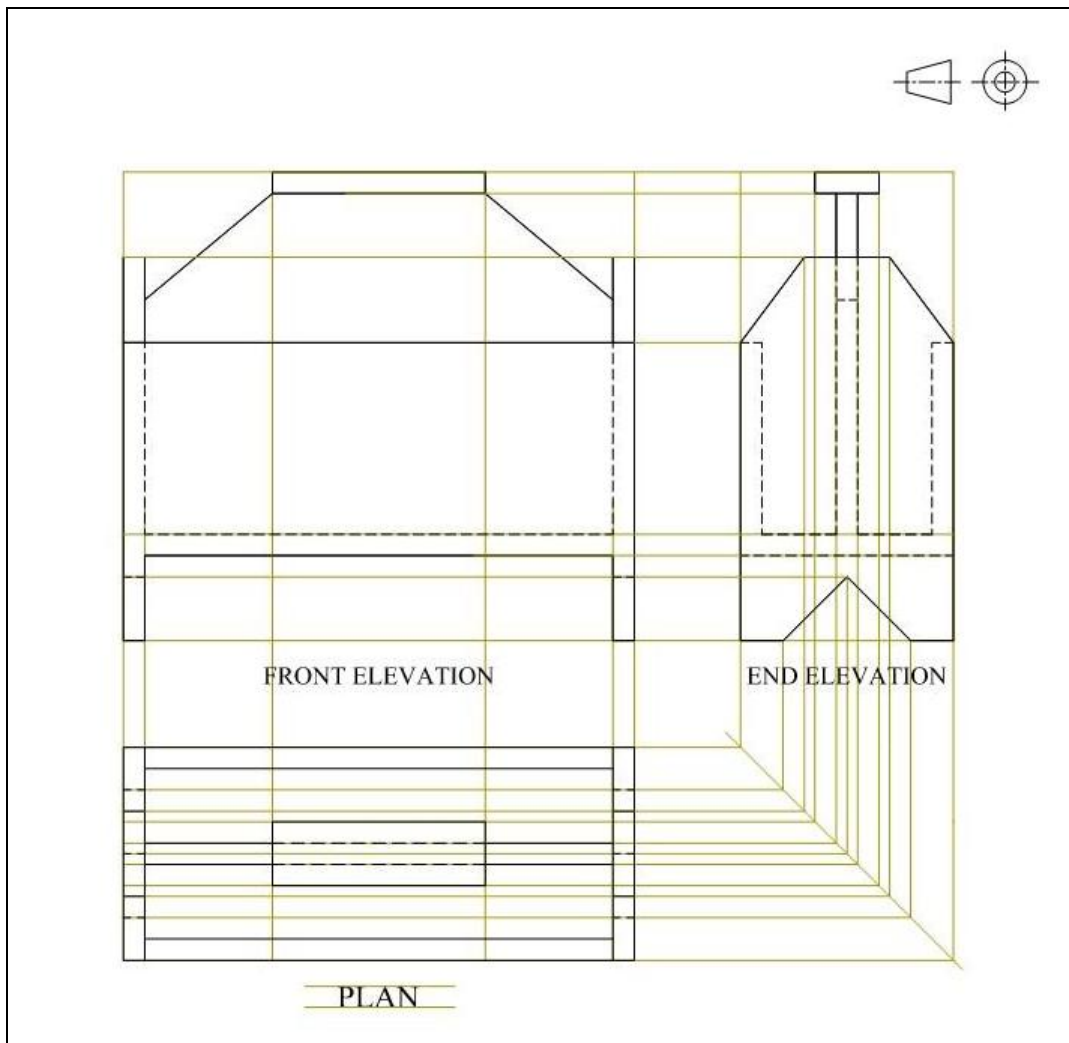


Annual Examinations for Secondary Schools 2014

FORM 2 GRAPHICAL COMMUNICATION MARKING SCHEME

Question No. 1 Orthographic Projection

a) projecting lines from the front and end views	2	Level 6
drawing the shorter ends of the rack	3	Level 7
drawing the longer ends of the rack	3	Level 7
drawing the central part including the handle	3	Level 7
showing all hidden detail	2	Level 7
b) labelling the front view	2	Level 6
presentation / neatness and accuracy	1	Level 7
Total marks for question No. 1	16	



Question No. 1

Question No. 2

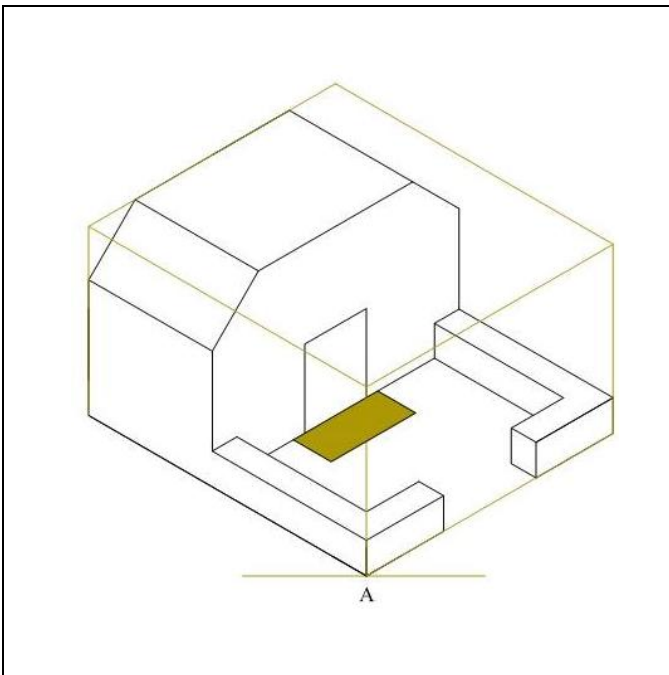
Isometric Projection

deduct 5 marks if not using the correct angles (30° x 30°)			
a) drawing the crate (award marks if crate is not drawn but drg. is correct)	1		Level 7
drawing the front boundary wall	6		Level 8
drawing the dwelling, including door	6		Level 7
b) drawing a rectangular carpet	4		Level 8
shading the carpet in pencil	1		Level 5
presentation / neatness and accuracy	2		Level 7
Total marks for question No. 2		20	

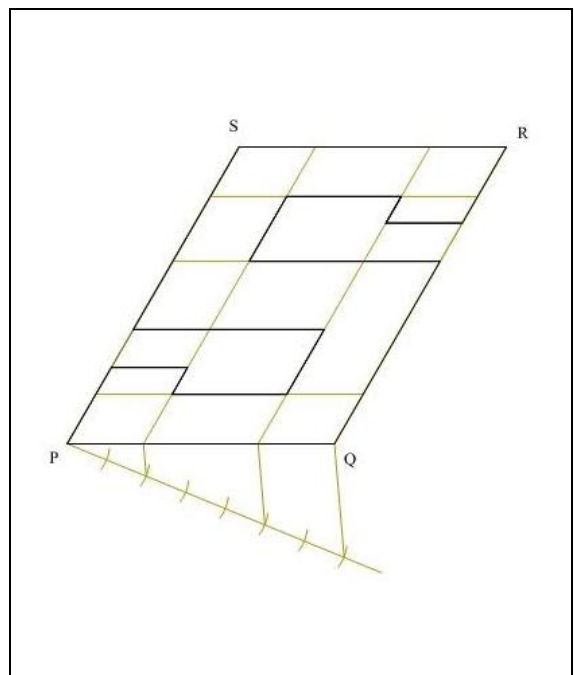
Question No. 3

Division of lines

dividing PQ into the required ratio using the necessary construction	6		Level 7
drawing the two faint 60° lines	1		Level 7
marking correctly the six vertical measurements	2		Level 7
drawing the profile of the letter	2		Level 5
colouring the letter	2		Level 5
presentation / neatness and accuracy	1		Level 7
Total marks for question No. 3		14	



Question No. 2



Question No. 3

Question No. 4

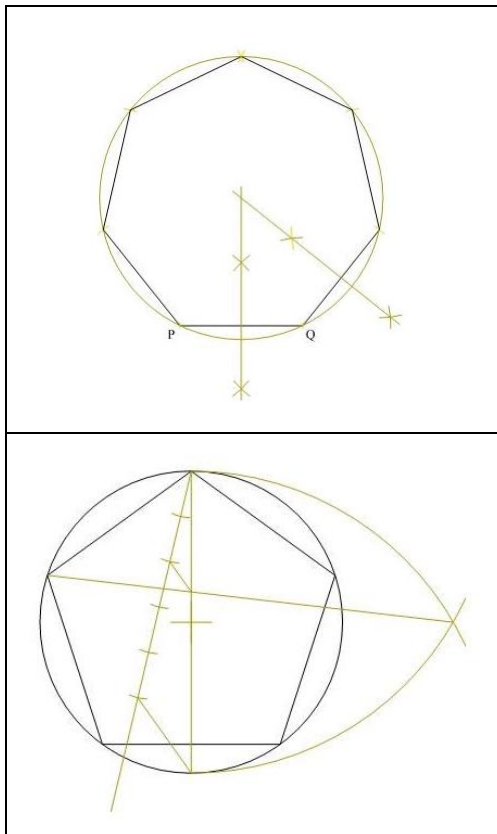
Construction of Polygons

a) using a construction method to obtain the seven corners of the heptagon	6	Level 7
joining the seven points to form the heptagon	1	Level 6
presentation / neatness and accuracy	1	Level 7
b) drawing the diameter	1	Level 7
dividing the diameter into 5 parts, noting the 2 nd division	2	Level 7
drawing the two similar arcs	1	Level 7
drawing the final construction line to touch the circumference	1	Level 7
marking the arcs along the circumference	1	Level 7
joining the arcs to form the pentagon	1	Level 6
presentation / neatness and accuracy	1	Level 7
Total marks for question No. 4		16

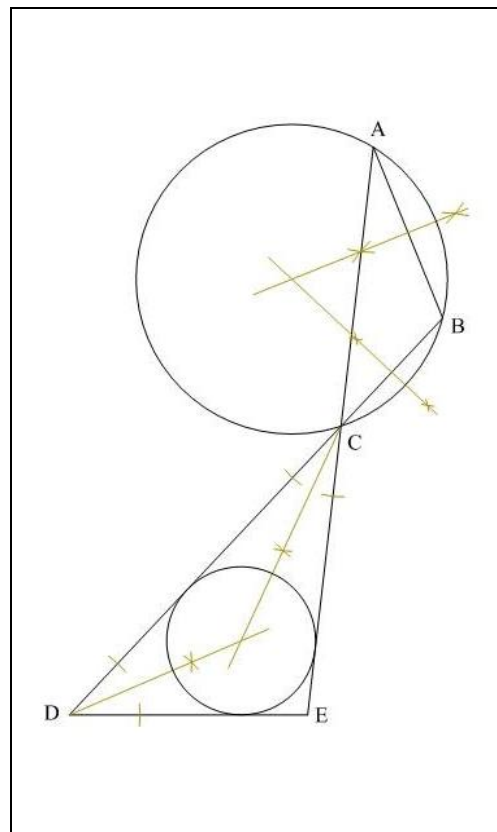
Question No. 5

Inscribed/Circumscribed Triangles

a) bisecting one side of triangle ABC	2	Level 7
bisecting another side of triangle ABC	2	Level 7
circumscribing the circle	2	Level 7
presentation/neatness and accuracy	2	Level 7
b) bisecting one angle of triangle CDE	2	Level 7
bisecting another angle of triangle CDE	2	Level 7
inscribing the circle	2	Level 7
presentation/neatness and accuracy	2	Level 7
Total marks for question No. 5		16



Question Nos. 4a and 4b



Question No. 5

a) (i) colouring the circular and diagonal band in red	2		Level 7
colouring the hand and flower in black, leaving a white background	2		Level 7
(ii) meaning: do not pick flowers	2		Level 6
b) drawing two preliminary sketches	4		Level 6
making a final drawing, using instruments where required	4		Level 7
using the correct colours (subject in black on a white background)	3		Level 6
presentation/neatness and accuracy	1		Level 7
Total marks for question No. 6		18	



Question No. 6a



Question No. 6b